



UPDATE – 33-35 JAMESTOWN ROAD, LONDON, NW1 7DB

(PLANNING PERMISSION 2024/4953/P)

The project is located at 33-35 Jamestown Road to the North and 211 Arlington Road to the East. The site wraps around the existing corner building at 31 Jamestown Road, a late 19th century public house. The project will comprise of 178 student bedrooms with associated amenity space, 27 affordable homes and nearly c.3,500 sqft GIA of flexible commercial space. The two buildings, designed in collaboration with Morris+Co will reach six stories at the highest point.

The project will feature a striking façade adorned with horizontal bands and fluted panels, paying homage to the historical context of the area. A shared garden with play space will be provided at podium level, accessible by both residents and students. This development is committed to BREEAM Excellent whilst targeting BREEAM Outstanding and is set to be amongst the first UK Purpose Built Student Accommodation projects to be accredited WELL Platinum.

ON-SITE WORKS

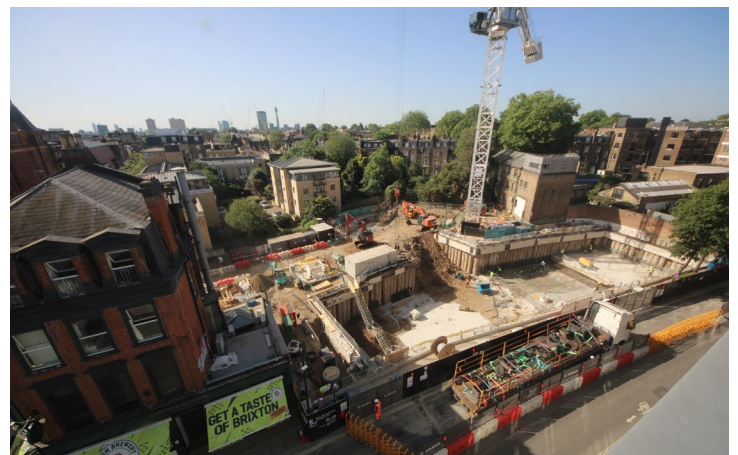
Last month saw Arada London achieve several project milestones including completion of capping beams, C3 attenuation tank, tower crane 2 base and new sewer connection.

Dust, noise, vibration and ground monitoring sensors are in place to monitor construction works to ensure the acceptable levels are not exceeded. A monthly report is being issued to London Borough of Camden. This is also displayed on the site notice board.

The Construction Working Group next meeting is expected to take place in the 2nd week of June 2026.

In June, basement and external drainage works will be complete. Raft slab work will progress and basement liner walls will start. The new site welfare will be in place and tower crane 2 will be erected.

Our timelapse camera (below) shows the latest at Jamestown Road. The camera will enable us to capture all key stages in the development lifecycle.



ABOUT ARADA LONDON

Arada London, part of the Arada Group since 2025, is dedicated to shaping high-quality, integrated and sustainable places across the capital. With a pipeline of more than 10,000 homes, the business is one of London's leading mixed-use developers, with expertise spanning residential, student accommodation, workspace and complex regeneration projects.

If you have any questions, please contact
 Joao Leao, Project Lead - London
 E: enquiryjt.london@arada.com
 W: aradalondon.com
 W: jamestown-road.co.uk

4 - 5 Coleridge Gardens
 London, NW6 3QH



CCS Registration no. 517703



KEY MILESTONE DATES Q2 2026

- COMPLETION OF BASEMENT DRAINAGE AND WATERPROOFING
- COMPLETION OF BASEMENT SLAB
- START BASEMENT LINER WALLS
- NEW SITE WELFARE INSTALLATION
- TOWER CRANE 2 ERECTION